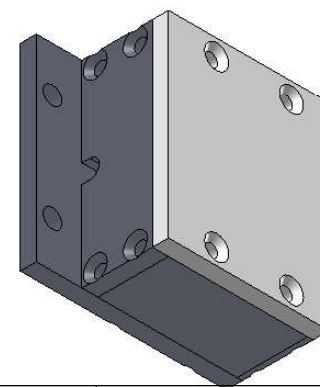
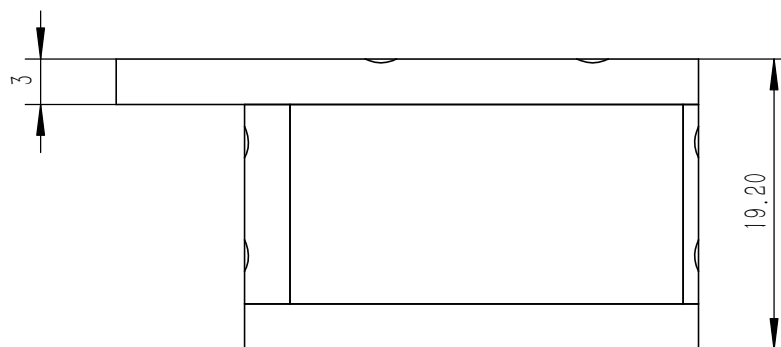
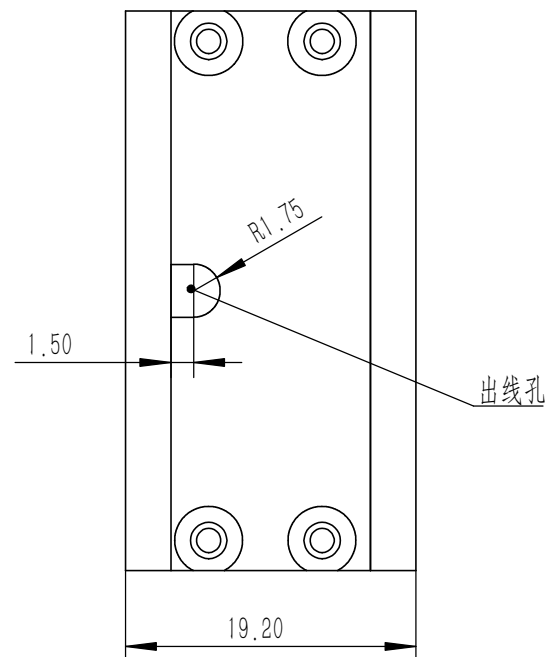
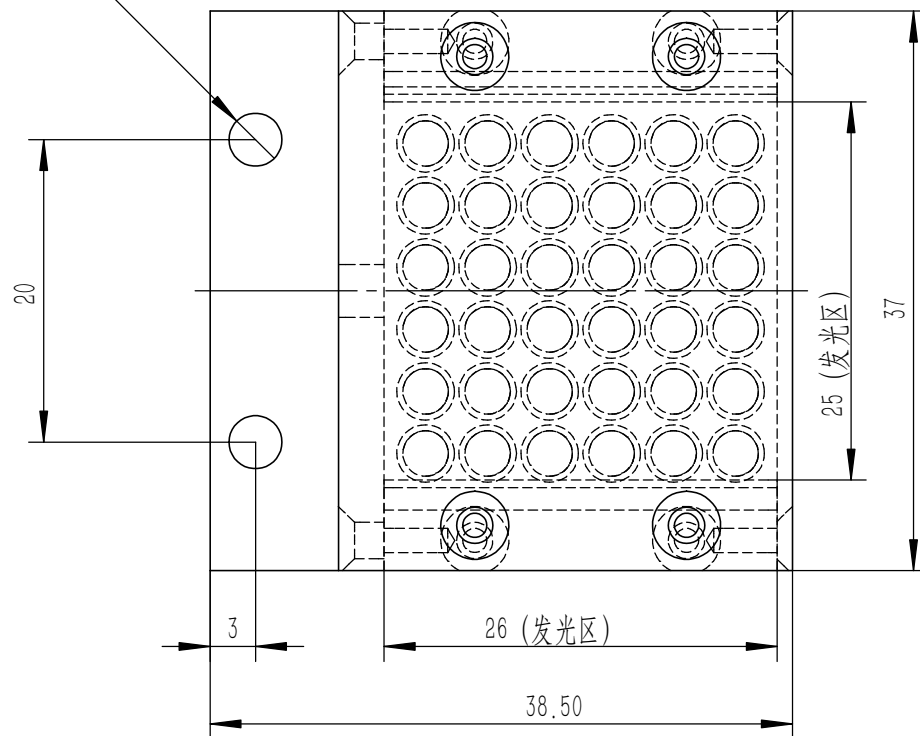


Ø3.50 贯穿



M/N	BTH-27X27
MATERAIL	
UNIT	mm
NAME	
D/N	
PART NAME	
SURFTREAT	外壳黑色阳极喷砂处理

技术要求:

- 1.要求表面光滑,无毛刺,无划痕,各棱角边倒角为C0.2,确保成品无棱角;
- 2.要求所有未标注尺寸公差在 $\pm 0.1$ ;

3.工件表面粗糙度为  $\sqrt{3.2}$ 。

SCALE

QTY/SET  
1

PROJECTION